

Green Infrastructure Planning in the context of Neighbourhood Planning



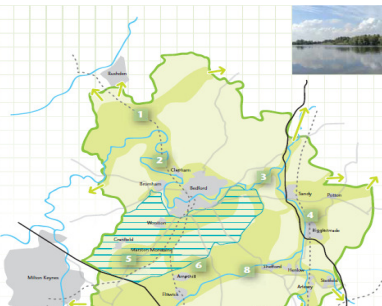
Green Infrastructure (GI) is defined as:

“A strategically planned and managed network of accessible greenspaces and access routes, landscapes, biodiversity and heritage which will meet the needs of existing and new communities in Bedfordshire and Luton.”

Beds & Luton GI Consortium (now Local Nature Partnership)

Strategic GI Plans

The [Bedfordshire and Luton Strategic Green Infrastructure Plan \(2007\)](#) identifies a broad, spatial vision for GI across the county. It identifies priority areas for enhancing the 5 GI themes of Access, Open Space, Biodiversity, Heritage and Landscape. The [Bedford Green Infrastructure Plan \(2009\)](#) complements the strategic GI Plan by identifying more detailed spatial priorities across Bedford Borough and provides detailed background information to support other Bedford Borough Council policies and proposals.



Community GI Plans

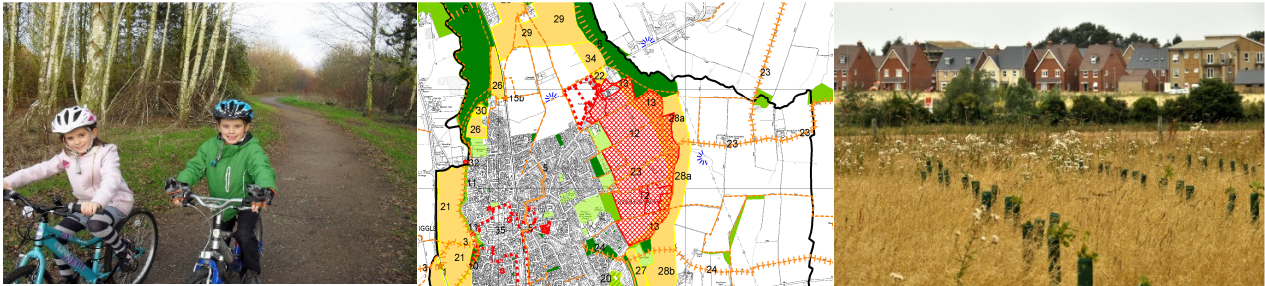
To ensure maximum benefit at a local level is gained from GI Planning, BRCC have been a lead partner in working with communities in creating parish-level GI Plans. Engaging local residents through facilitated workshops and consultation activities enables us to guide and support communities in identifying their own GI aspirations. Aligning these plans to the higher level Borough and County plans provides clear and considered community priorities and evidence for supporting local initiatives, securing funding and submitting comments in relation to planning applications.

Since 2009, BRCC have supported over 25 communities in producing parish-level GI Plans. Resulting aspirations which have been delivered range from benches and information boards installed at scenic viewpoints, through creating a new footpath including gates and bridges to fill a gap in the local rights of way network; to the planting of community woodlands and orchards.

[Completed GI Plans can be viewed here.](#)

GI Plans and Neighbourhood Plans

Parish-level GI Plans are useful in their own right; but have particular value in supporting and providing an evidence base for other strategies and plans, including Neighbourhood Plans. Aspirations and priorities identified through GI planning can inform the setting of objectives and policies within a Neighbourhood Plan.



BRCC's GI Planning Service

BRCC's GI Team are able to provide a 1-stop shop in leading your community through the production of a Community GI Plan. With each team member having over 15 years' experience of working with communities and GI in Bedfordshire and with the support of partner organisations such as the Bedfordshire and Luton Biodiversity Recording and Monitoring Centre and Bedford Borough Council, we have the knowledge, expertise and contacts to ensure that a coherent, consensus-driven and aspirational GI Plan is produced for your community.

Whether the Plan is to 'stand-alone' or be used to inform the development of a Neighbourhood Plan, we would be very pleased to discuss GI planning and our services with you.

Please contact:

Cliff Andrews, Supporting Communities Manager and GI Team Leader:

Tel: 01234 832617 E-mail: cliffa@bedsrcc.org.uk Web: www.bedsrcc.org.uk