




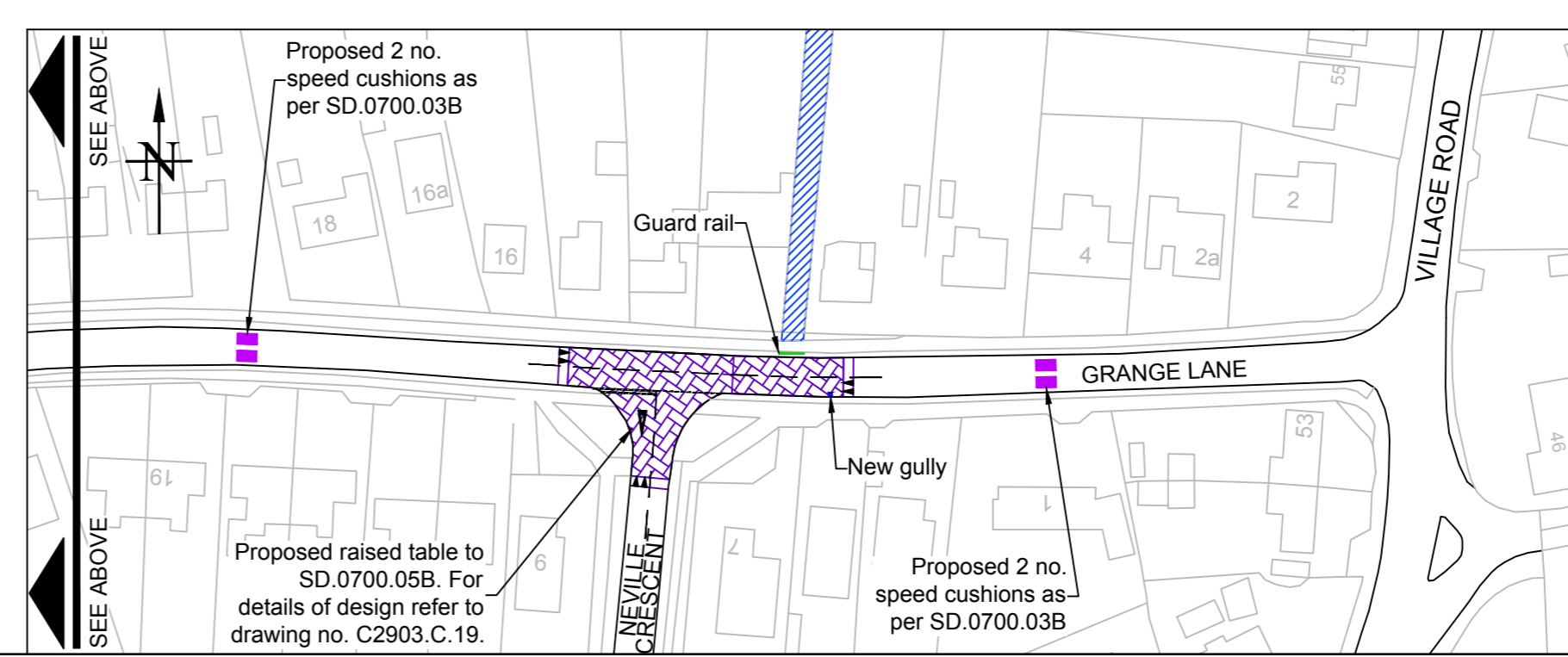
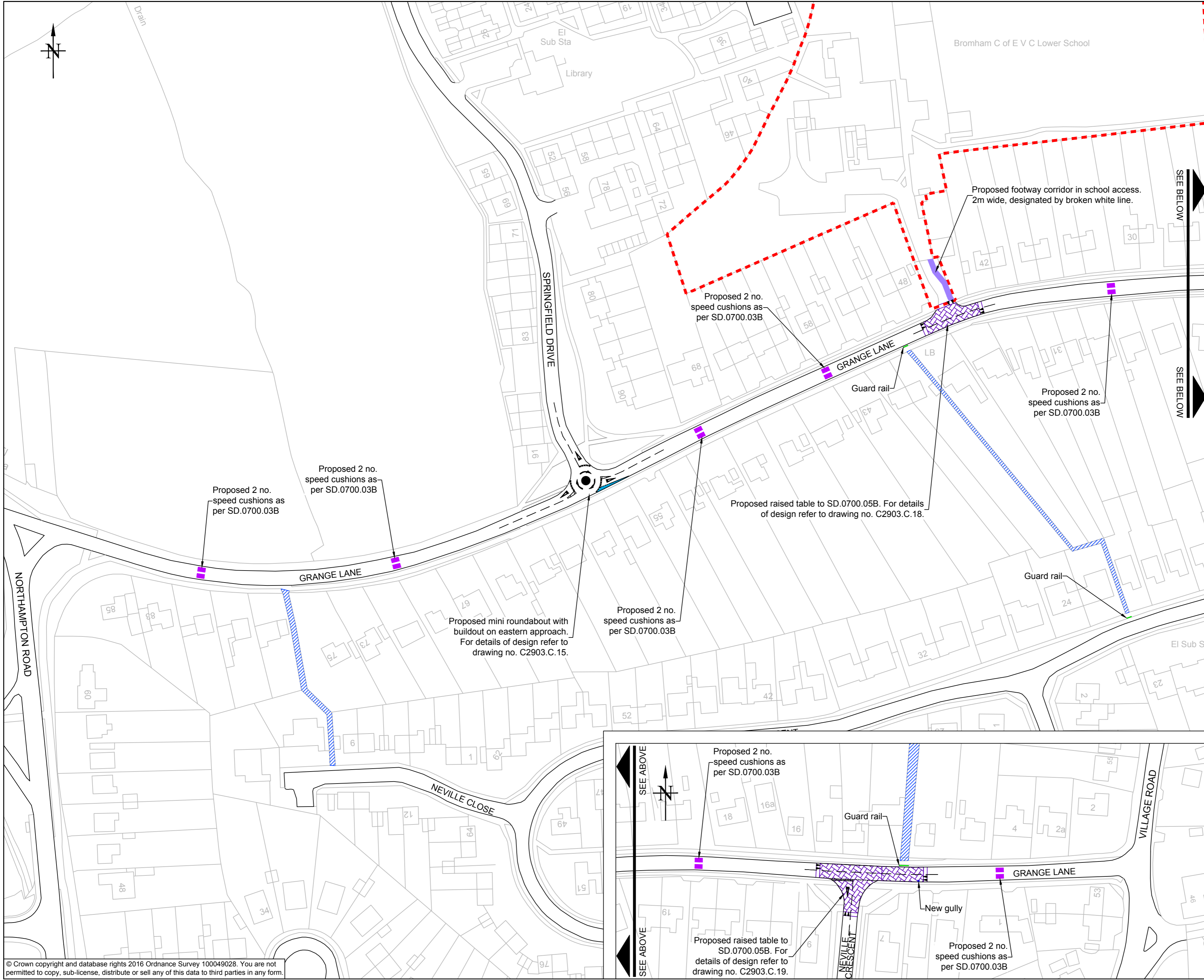
PRINTS FROM THIS DRAWING ARE UNCONTROLLED UNLESS OTHERWISE STATED

KEY:

-  Existing footway alleyways / access paths
-  Bituminous raised table to SD.0700.05B.
-  School boundary

NOTES:

- Proposed reduction of Grange Lane speed limit to 20mph.
- Raised table standard detail drawing number: SD.0700.05B to be formed in bituminous material.
- Speed cushion standard detail drawing number: SD.0700.03B - size 1600mmX3000mm.
- This drawing to be read in conjunction with detailed drawings:
 - C2903.C.15 - Springfield Drive Junction Mini Roundabout.
 - C2903.C.18 - Proposed Raised Table at School Access.
 - C2903.C.19 - Proposed Raised Table at Neville Crescent.



02/02/2018	First Issue	0	TB
DATE	AMENDMENTS	REV	BY



Engineering Services
 BOROUGH HALL, CAULDWELL ST, BEDFORD, MK42 9AP
 Tel. (01234) 276958

CLIENT
Environment and Sustainable Communities

SCHEME
**Carriageway Resurfacing 2018-2019
 Grange Lane, Bromham**

DRAWING TITLE
Proposed Traffic Calming Preferred Option

DRG No.
C2903.C.12

DRG STATUS
Construction

SCALE @ A2	DATE	DRAWN	CHECKED
1:1000	02/02/2018	TB	KC