
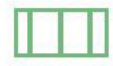
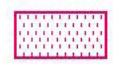
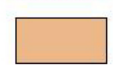
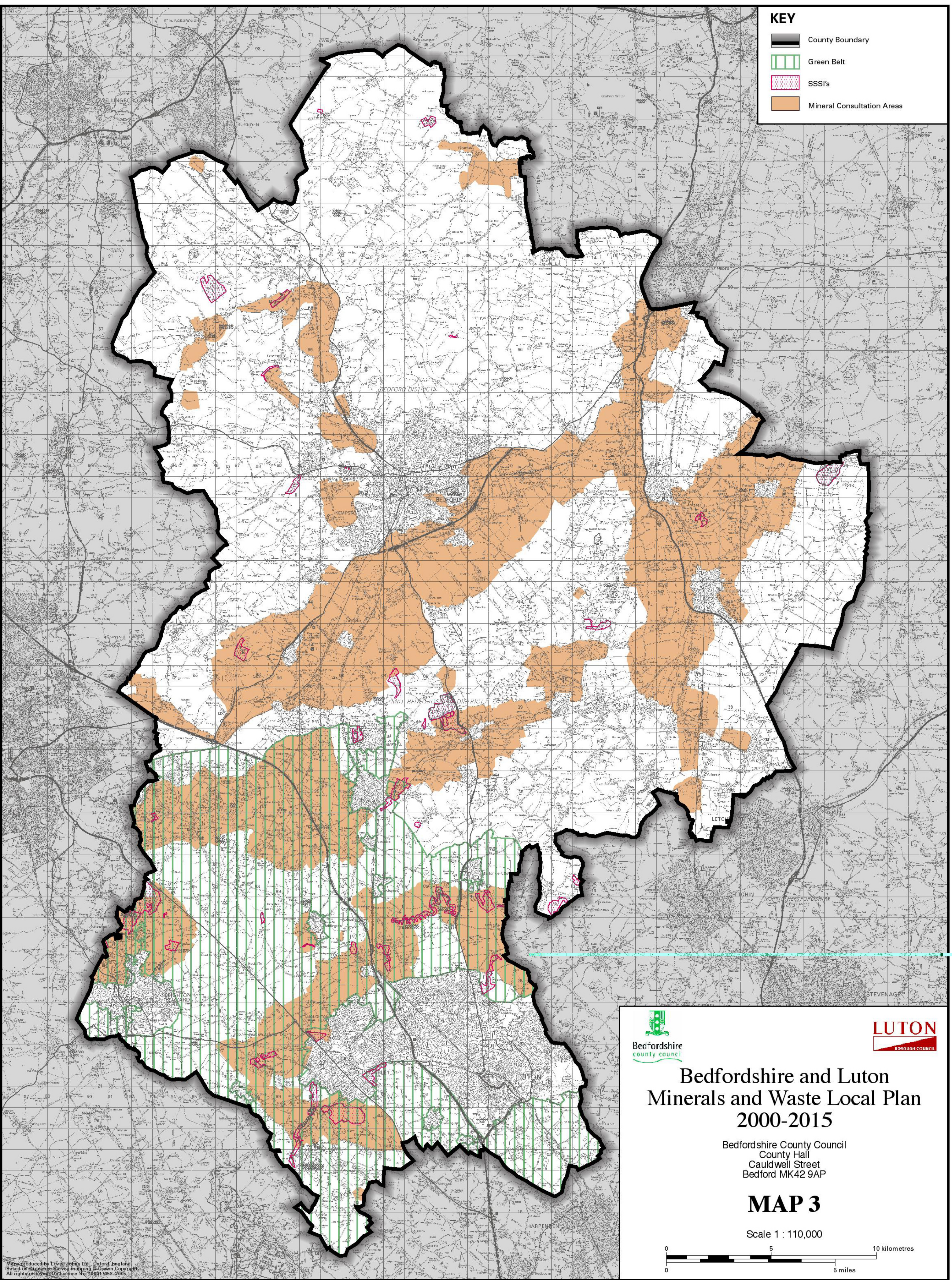


**KEY**

-  County Boundary
-  Green Belt
-  SSSI's
-  Mineral Consultation Areas

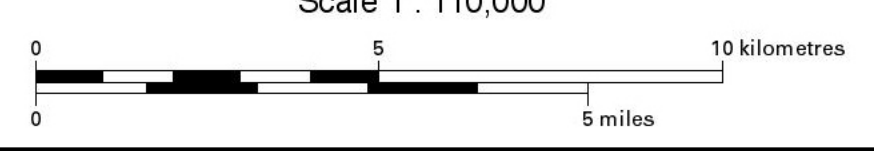


## Bedfordshire and Luton Minerals and Waste Local Plan 2000-2015

Bedfordshire County Council  
County Hall  
Cauldwell Street  
Bedford MK42 9AP

### MAP 3

Scale 1 : 110,000



Map produced by Lovell-Johns Ltd, Oxford, England.  
Based on Ordnance Survey mapping © Crown Copyright.  
All rights reserved. OS Licence No. 100017358-2005